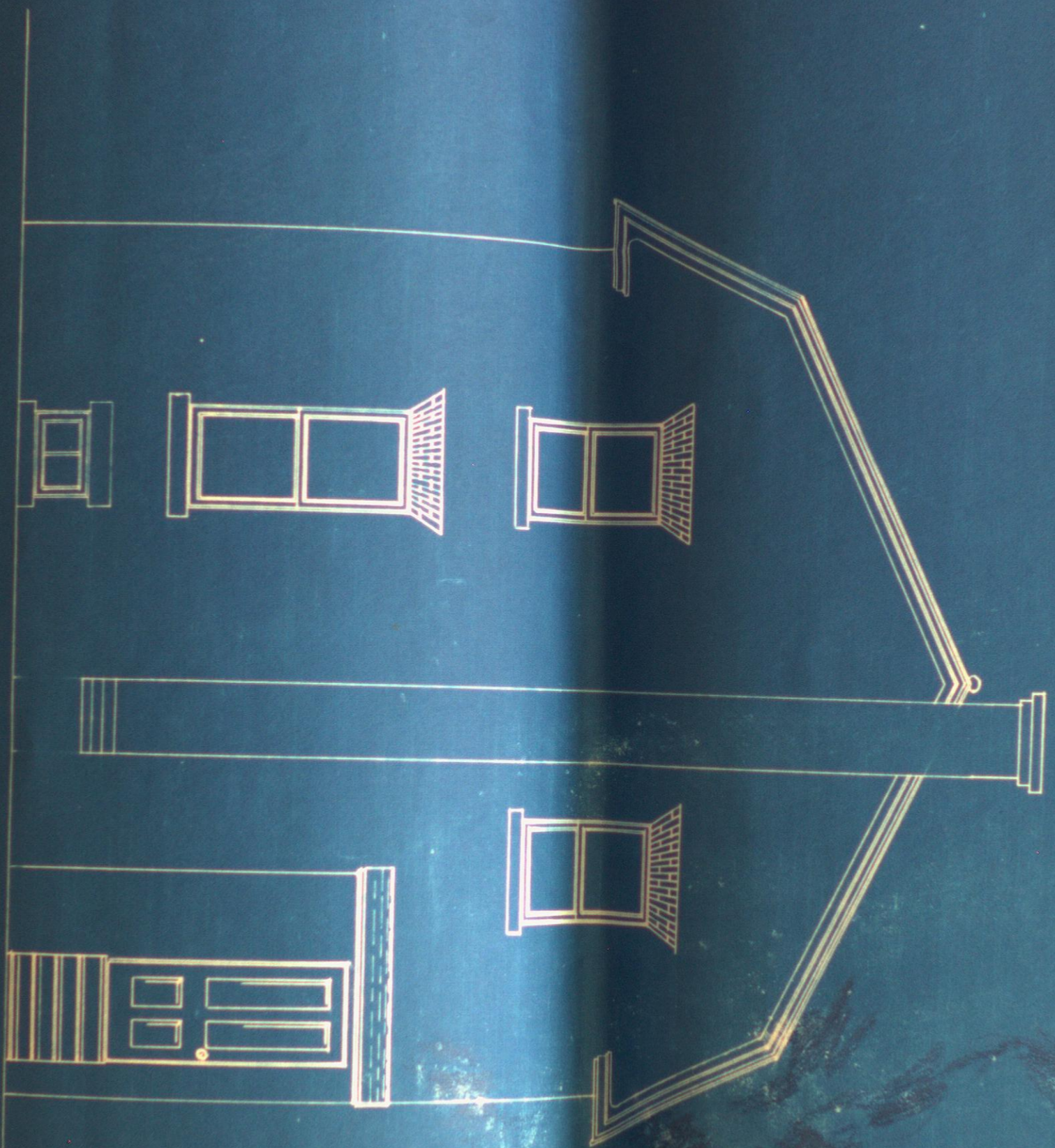




FRONT ELEVATION

APPROVED
AUG 9 - 1919
J. A. - Searles Director
SUBJECT TO CONDITIONS
STATED IN LETTER FROM
JAS. GOVAN, ARCH'T.



REAR ELEVATION

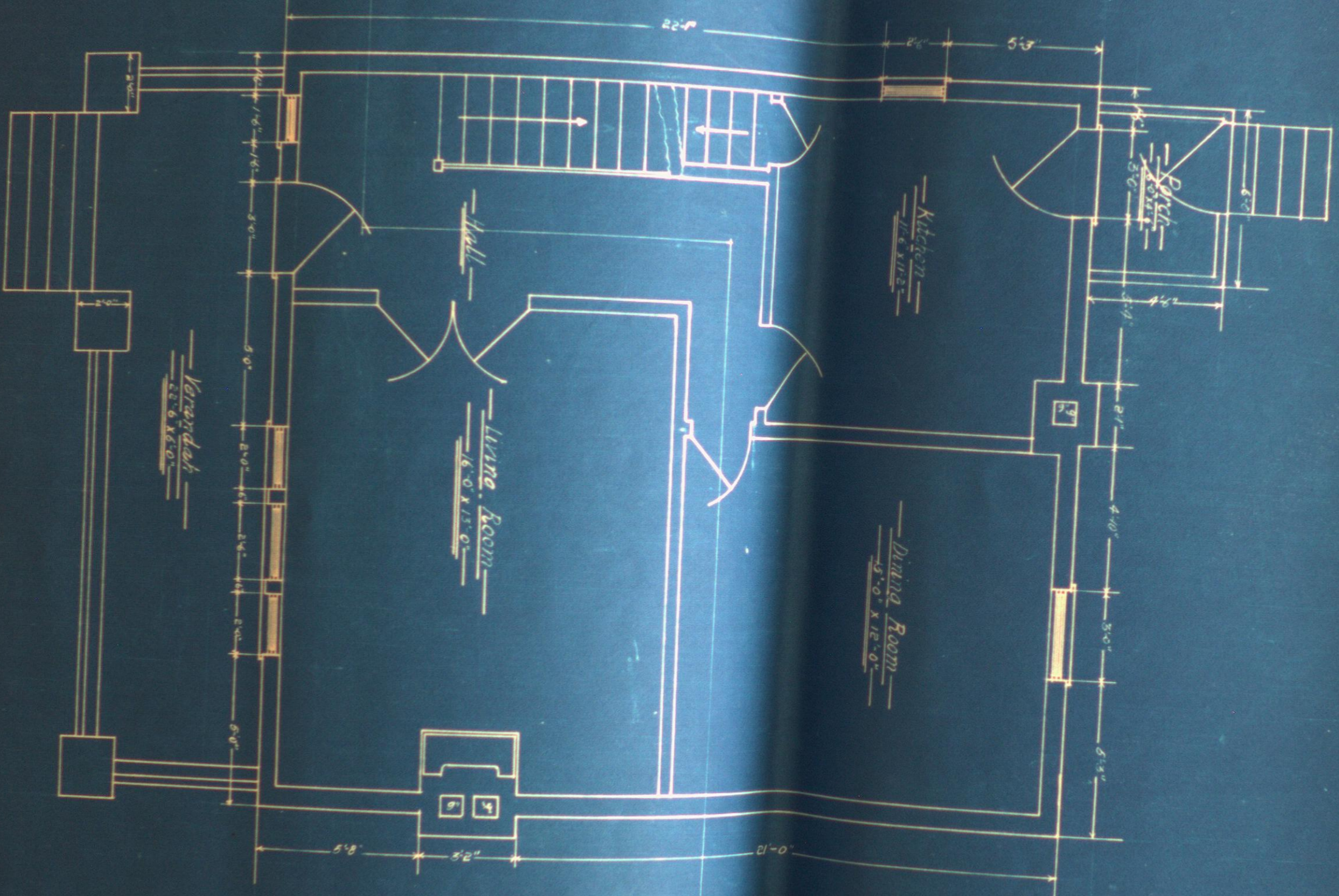
APPROVED

AUG 9 - 1919

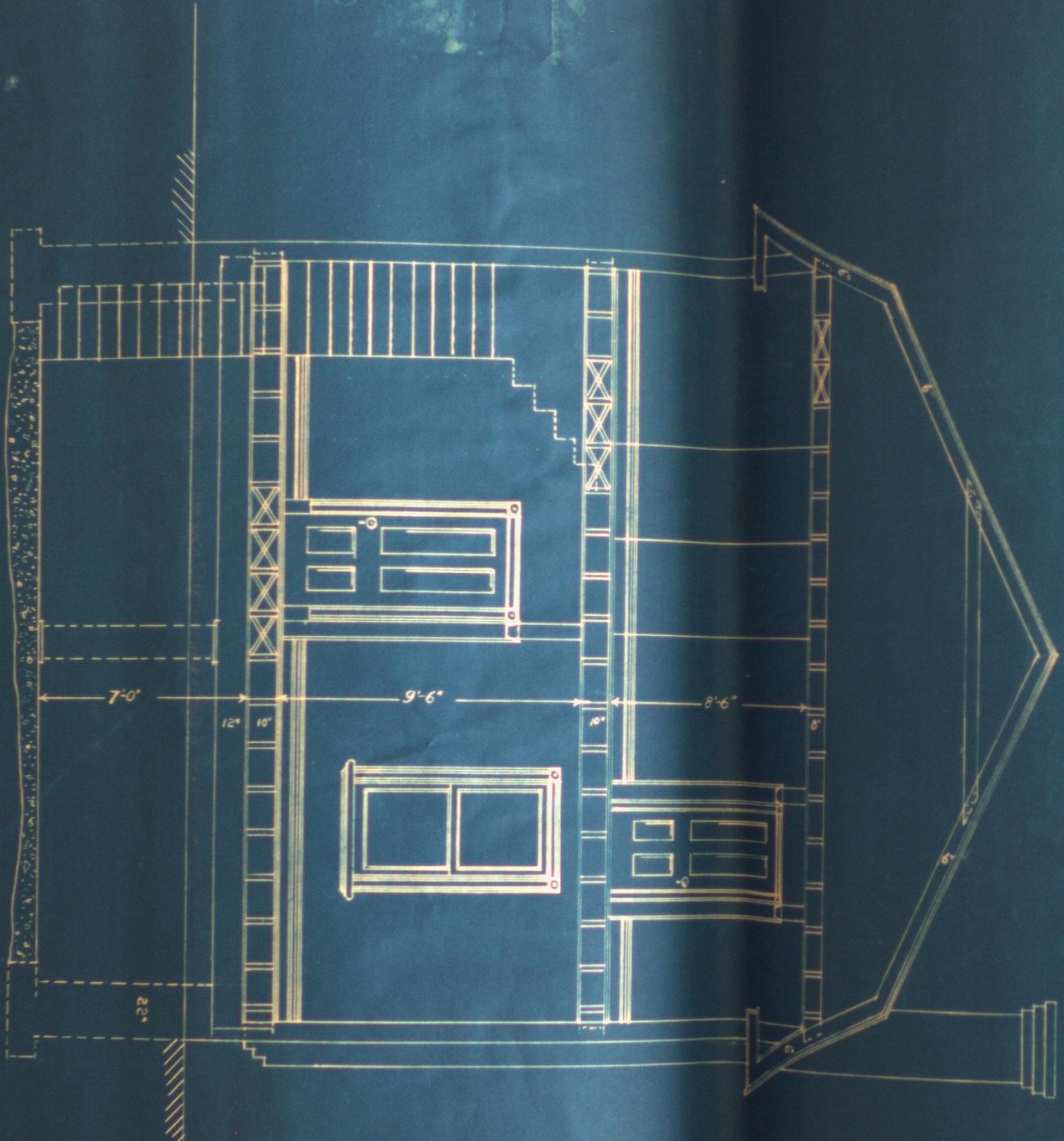
L. A. Davis Director

SUBJECT TO CONDITIONS
STATED IN LETTER FROM

JAS. GOVAN, ARCH'T.



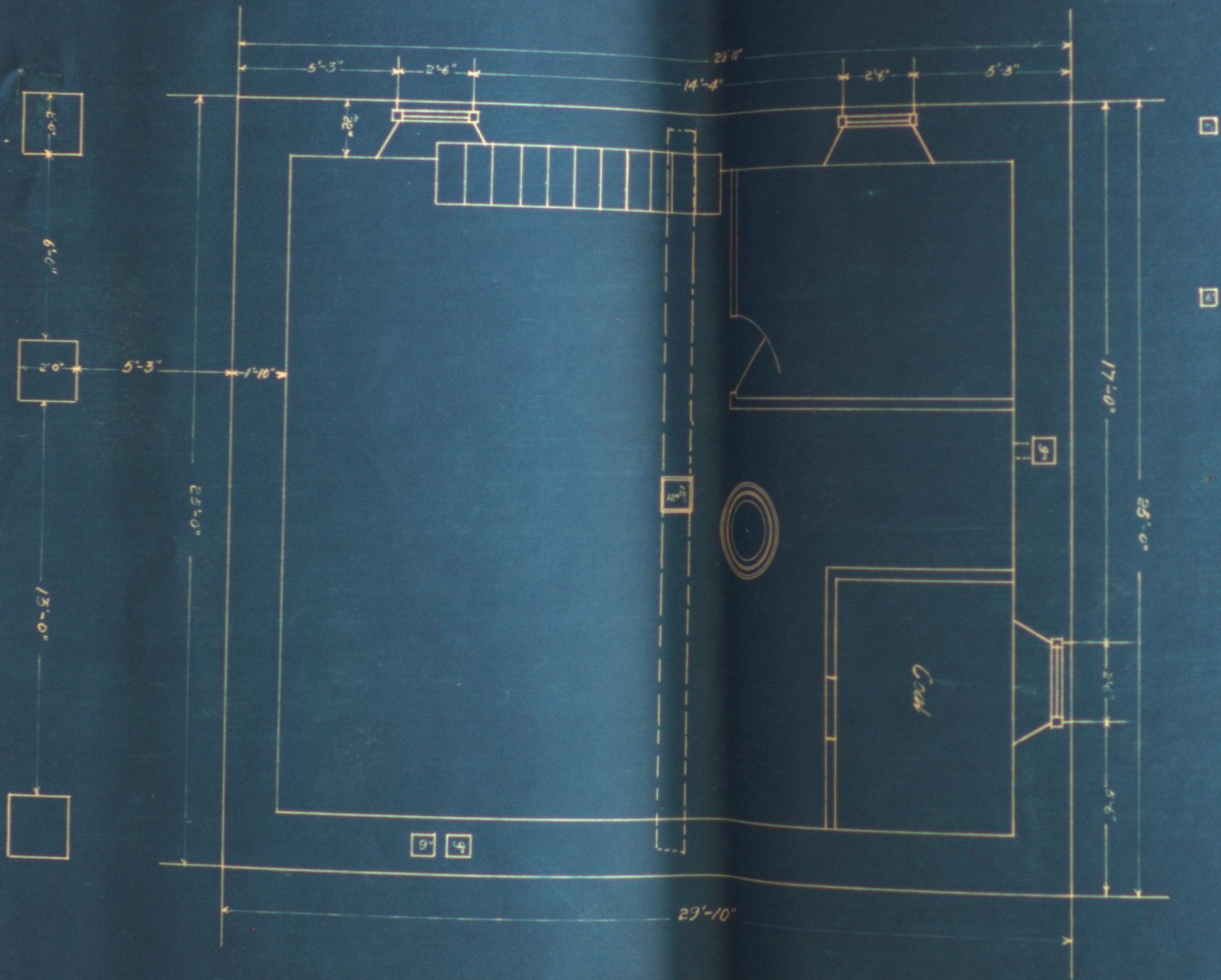
GROUND FLOOR PLAN



TRANSVERSAL CUT

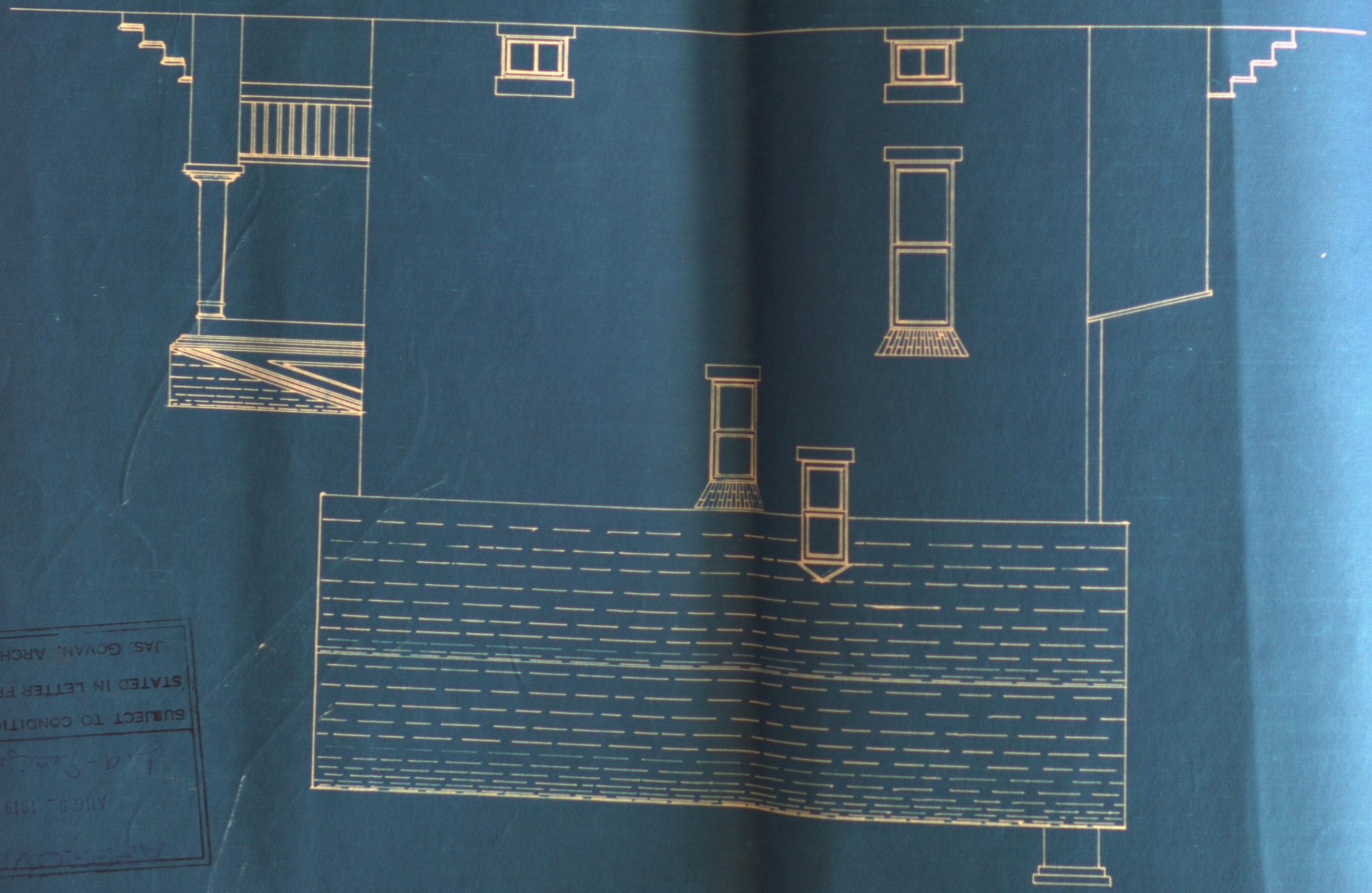
AUG 0 - 1919
 L. A. - [Signature] Division
 SUBJECT TO CONDITIONS
 STATED IN LETTER FROM
 JAS. GOVAN, ARCH'T.

FOUNDATION



APPROVED
AUG 9, 1919
L. A. S. [Signature] Director
SUBJECT TO CONDITIONS
STATED IN LETTER FROM
JAS. GOVAN, ARCHT.

SIDE ELEVATION



JAS. GOVAN, ARCH'T.
STATED IN LETTER FROM
SUBJECT TO CONDITIONS
AUG 2 1919